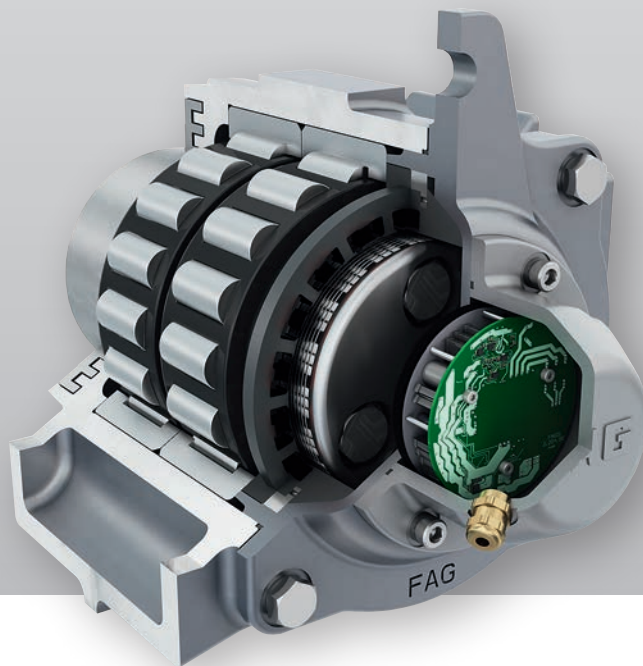


Rolling bearings
Plain bearings
Linear technology

Axlebox Generator for Railway Applications



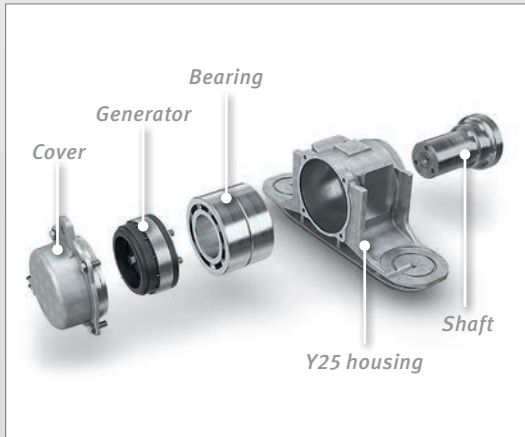
FAG

SCHAEFFLER

Axlebox generator for railway applications

Description

Independent, wear-free power generator for use in railcars as low-power or high-power version:



Functional advantages

- Cost-effective and very reliable power supply solution for every railway application
- Supplies electrical energy in a broad speed range

Product benefits

- Provides power for a range of railway applications, e. g., condition monitoring, lighting, braking assistant, and even folding door actuation on bulk material wagons
- Suitable for retrofitting in freight cars already in use

Integration/installation

- Generator comprises a permanent magnet rotor and wear-free stator

Performance range

- Low-power version: from 1 W to 50 W
- High-power version: from 100 W to 500 W